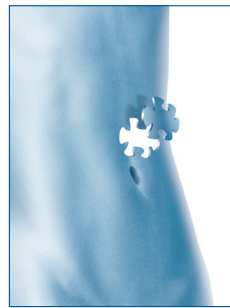


PRODUCT CATALOG

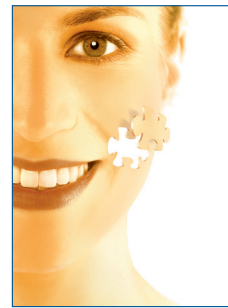
Osseous & Connective Tissue
Tendinous & Cartilaginous Tissue



general
surgery



orthopedic
surgery



dental
surgery

perfect results

Allogenic & Xenogenic Grafts





allogenic cancellous bone

68XXX Multi-tissue donor



Tutoplast® Cancellous Block
Tutoplast® Spongiosa Block

68122	30 mm x 30 mm x 12 mm
68121	20 mm x 30 mm x 12 mm
68127	10 mm x 10 mm x 30 mm
68120	10 mm x 10 mm x 20 mm



Tutoplast® Cancellous Particles
Tutoplast® Spongiosa Partikel

68146	Ø 2 mm - 4 mm / 15 cm ³
68067	Ø 2 mm - 4 mm / 3 cm ³
68158	Ø 1 mm - 2 mm / 3 cm ³
68197	Ø 1 mm - 2 mm / 2 cm ³
68196	Ø 1 mm - 2 mm / 1 cm ³
68195	Ø 1 mm - 2 mm / 0,5 cm ³



Tutoplast® Cancellous Hemisphere
Tutoplast® Spongiosa Halbkugel

68095	Hemisphere (1/2 femoral head)
-------	-------------------------------



Tutoplast® Cancellous Chips
Tutoplast® Spongiosa Chips

68123	Ø 4 mm - 10 mm / 30 cm ³
68134	Ø 4 mm - 10 mm / 15 cm ³



Tutoplast® Cancellous Dowel
Tutoplast® Spongiosa Dübel

68162*	Ø 16 mm / L 16 mm
68161*	Ø 14 mm / L 16 mm
68160*	Ø 12 mm / L 16 mm

*Order on special request only

allogenic cortico-cancellous bone

68XXX Multi-tissue donor



Tutoplast® Iliac Crest Wedge
Tutoplast® Beckenkamm Keil

68115	40 mm x 25 mm x ≥ 5 mm
68118	20 mm x 25 mm x ≥ 5 mm
68124	16 mm x 25 mm x ≥ 5 mm
68126	13 mm x 30 mm x ≥ 5 mm
68152	12 mm x 25 mm x ≥ 5 mm
68165	10 mm x 25 mm x ≥ 5 mm



Tutoplast® Patella Block
Tutoplast® Patella Block

68145*	≥ 28 mm x ≥ 16 mm x 16 mm
68129	12 mm x 12 mm x 20 mm



Tutoplast® Patella Dowel
Tutoplast® Patella Dübel

68142*	Ø 16 mm / H 16 mm
68141*	Ø 14 mm / H 16 mm
68140*	Ø 12 mm / H 16 mm



Tutoplast® Cortico-Cancellous Chips
Tutoplast® Kortiko-Spongiosa Chips

68154*	Ø 4 mm - 10 mm / 60 cm ³
68205*	Ø 4 mm - 10 mm / > 45 cm ³
68148*	Ø 4 mm - 10 mm / 30 cm ³
68110*	Ø 4 mm - 10 mm / 15 cm ³



Tutoplast® Cortico-Cancellous Particles
Tutoplast® Kortiko-Spongiosa Partikel

68119*	Ø 2 mm - 4 mm / 30 cm ³
68147*	Ø 2 mm - 4 mm / 15 cm ³



*Order on special request only



allogenic cortical bone

68XXX Multi-tissue donor



Tutoplast® Femoral Shaft
Tutoplast® Femur Schaft

68098*	150 mm
68182	≥ 100 mm
68181	70 mm
68180*	50 mm
68179*	30 mm
68178*	15 mm



Tutoplast® Fibular Shaft
Tutoplast® Fibula Schaft

68155	100 mm
68136	70 mm
68107	50 mm
68116	40 mm
68137	12 mm
68135	10 mm
68185*	6 mm



Tutoplast® Cortical
Tutoplast® Kortikalis

68191*	Tutoplast® Femur Proximal	180 mm
68101*	Tutoplast® Femur Distal	180 mm
68184*	Tutoplast® Tibia Proximal	150 mm
68096*	Tutoplast® Humerus Shaft	180 mm
68149*	Tutoplast® Cortical Particles	Ø 2 mm - 4 mm / 15 cm ³



Tutoplast® Ulna Shaft
Tutoplast® Ulna Schaft

68510	40 mm
-------	-------



Tutoplast® Radius Shaft
Tutoplast® Radius Schaft

68501	50 mm
68500*	40 mm

*Order on special request only



allogenic tendons

68XXX Multi-tissue donor



Tutoplast® BTB
Tutoplast® BTB

68242*	105 mm x 12 mm
68241	90 mm x 12 mm
68240	80 mm x 12 mm



Tutoplast® ACT
Tutoplast® ACT

68263*	Tendon 200 mm / Bone Block 20 mm x 15 mm x 15 mm
--------	---



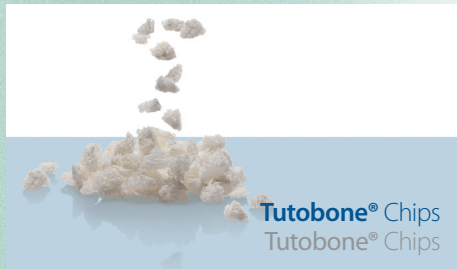
Tutoplast® ATT
Tutoplast® ATT

68269	220 mm
68243	200 mm
68068*	180 mm
68156*	160 mm

*Order on special request only



xenogenic cancellous bone



68305	Ø 4 mm - 10 mm / 100 cm ³
68304	Ø 4 mm - 10 mm / 60 cm ³
68303	Ø 4 mm - 10 mm / 30 cm ³
68313	Ø 4 mm - 10 mm / 15 cm ³
68318	Ø 4 mm - 10 mm / 5 cm ³



68302	20 mm x 20 mm x 30 mm
68301	10 mm x 20 mm x 20 mm
68300	10 mm x 10 mm x 20 mm



68315	Ø 2 mm - 4 mm / 30 cm ³
68314	Ø 2 mm - 4 mm / 15 cm ³
68319	Ø 2 mm - 4 mm / 3 cm ³



68325	40 mm x 25 mm x 14 mm
68324	40 mm x 25 mm x 12 mm
68323	35 mm x 25 mm x 12 mm
68329	35 mm x 25 mm x 10 mm
68321	35 mm x 22 mm x 8 mm
68320	35 mm x 22 mm x 5 mm



68312	Ø 16 mm / H 20 mm
68311	Ø 14 mm / H 20 mm
68310	Ø 12 mm / H 20 mm
68309	Ø 11 mm / H 20 mm
68332	Ø 11 mm / H 10 mm
68335*	Ø 14 mm / H 14 mm

*Order on special request only



Tutobone® Rod
Tutobone® Stab

68327	35 mm x 4 mm x 3 mm
-------	---------------------



Tutobone® Plate
Tutobone® Platte

68326	25 mm x 15 mm x 3 mm
-------	----------------------



Tutobone® Microchips
Tutobone® Mikrochips

68308	Ø 1 mm - 2 mm / 2 cm ³
68317	Ø 0,25 mm - 1 mm / 1 cm ³



Spine Line® CIF-P
Spine Line® CIF-P

68606*	14 mm x 12 mm x 10 mm
68605*	14 mm x 12 mm x 9 mm
68604*	14 mm x 12 mm x 8 mm
68603*	14 mm x 12 mm x 7 mm
68602*	14 mm x 12 mm x 6 mm



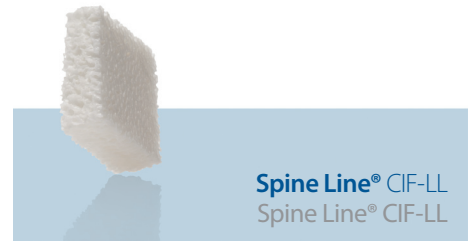
Spine Line® CBR
Spine Line® CBR

68636*	14 mm x 12 mm x 24 mm
68634*	14 mm x 12 mm x 20 mm
68632*	14 mm x 12 mm x 16 mm
68630*	14 mm x 12 mm x 12 mm

*Order on special request only



68614*	14 mm x 12 mm x 8 mm
68612*	14 mm x 12 mm x 6 mm
68610*	14 mm x 12 mm x 4 mm



68620*	16 mm x 14 mm x 9 mm
68619*	16 mm x 14 mm x 8 mm
68618*	16 mm x 14 mm x 7 mm
68617*	16 mm x 14 mm x 6 mm



68658*	15 mm x 30 mm x 60 mm
68656*	15 mm x 30 mm x 50 mm
68654*	15 mm x 30 mm x 40 mm
68652*	15 mm x 30 mm x 30 mm
68650*	15 mm x 30 mm x 20 mm

*Order on special request only

TUTOPLAST[®] processed

Der Tutoplast[®]-Prozess ist ein einzigartiges, mehrstufiges Konservierungs- und Sterilisationsverfahren für Binde- und Stützgewebe, das die antigenen Eigenschaften der Gewebe entfernt, eine gründliche Inaktivierung von Pathogenen darstellt und dabei Struktur, Biomechanik und Umbaufähigkeit der Gewebe nahezu unverändert erhält.

Tutoplast[®]-prozessierte Gewebe sind steril (SAL 10⁻⁶). Die Inaktivierungskapazität des gesamten Prozesses gegenüber Viren, Prionen und Keimen wurde von unabhängigen Instituten untersucht und die hohe Wirksamkeit bestätigt.

In vielen klinischen Studien erwiesen sich Tutoplast[®]-prozessierte Gewebe als vergleichbar zu autogenen Geweben.

The Tutoplast[®]-process is a proprietary multi-step preservation and sterilization process for connective and skeletal tissues that removes antigenicity and inactivates pathogens thoroughly without affecting structure, biomechanics and remodelling ability of the tissues.

Tutoplast[®]-processed tissues are sterile (SAL10⁻⁶). The inactivation capacity of the whole process against viruses, prions and microbes has been validated by independent laboratories that confirm the high efficacy of the process.

In many clinical studies Tutoplast[®]-processed tissues have been shown to be comparable to autografts.



xenogenic membrane



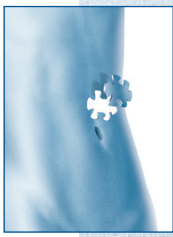
68443	120 mm x 160 mm
68442	80 mm x 120 mm
68441*	60 mm x 80 mm
68440*	40 mm x 50 mm



68342*	Ø 80 mm (thickness 0,1 mm – 0,2 mm)
68341*	Ø 60 mm (thickness 0,1 mm – 0,2 mm)
68349*	Ø 20 mm (thickness 0,1 mm – 0,2 mm)
68348*	Ø 14 mm (thickness 0,1 mm – 0,2 mm)
68347*	Ø 10 mm (thickness 0,1 mm – 0,2 mm)



68366*	140 mm x 200 mm
68355	120 mm x 160 mm
68367	80 mm x 110 mm
68362	70 mm x 80 mm
68354	60 mm x 140 mm
68353	60 mm x 80 mm
68360	50 mm x 110 mm
68352	40 mm x 100 mm
68351	40 mm x 50 mm
68358	30 mm x 40 mm
68357	20 mm x 100 mm
68350	20 mm x 30 mm
68361	15 mm x 30 mm
68356	15 mm x 20 mm
68364	3 mm x 120 mm
68359	Ø 14 mm



allogenic bone & cartilage

68XXX Multi-tissue donor



Tutoplast® Ossicula auditus
Tutoplast® Ossicula auditus

68050

Tutoplast® Ossicula
auditus Malleus



Tutoplast® Ossicula auditus
Tutoplast® Ossicula auditus

68051

Tutoplast® Ossicula
auditus Incus



Tutoplast® Cartilage
Tutoplast® Knorpel

68177

40 mm -10 mm/+20 mm



Tutoplast® Fascia lata
Tutoplast® Fascia lata

68031	80 mm x 200 mm
68019	60 mm x 120 mm
68045	60 mm x 80 mm
68044	40 mm x 100 mm
68018	40 mm x 70 mm
68014	40 mm x 50 mm
68089	30 mm x 60 mm
68024	30 mm x 40 mm
68029	20 mm x 200 mm
68021	20 mm x 140 mm
68057*	20 mm x 70 mm
68023	20 mm x 30 mm
68054*	15 mm x 300 mm
68741	15 mm x 60 mm (thickness > 0,9 mm)
68740	15 mm x 60 mm (thickness < 0,9 mm)
68091	15 mm x 60 mm
68048	10 mm x 140 mm
68035	3 mm x 120 mm
68036	Ø 14 mm



Tutoplast® Dermis
Tutoplast® Dermis

68239*	50 mm x 80 mm (rounded edges)
68234*	40 mm x 70 mm
68232*	20 mm x 40 mm
68228*	10 mm x 40 mm
68277*	10 mm x 20 mm

allogenic membrane

68XXX Multi-tissue donor



Tutoplast® Fascia temporalis
Tutoplast® Fascia temporalis

68056	20 mm x 30 mm
68055	Ø 20 mm
68064	10 mm x 25 mm (one side round edges)
68063	Ø 10 mm



Tutoplast® Pericardium
Tutoplast® Pericardium

68254	60 mm x 120 mm
68256	60 mm x 80 mm
68252	40 mm x 50 mm
68251	20 mm x 30 mm
68250	15 mm x 15 mm

*Order on special request only

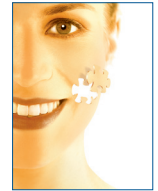
Allogenic & Xenogenic Grafts



general
surgery



orthopedic
surgery



dental
surgery

All deliveries are subject to the terms and conditions of Tutogen Medical GmbH, Status August 2007.
These can be seen and printed out under <http://www.tutogen.de/de/pdf/agb.pdf>.
Upon request we will send you the terms and conditions by mail.

Allografts and xenografts are preserved by the Tutoplast® process.
In Germany Tutoplast® Spongiosa, Tutoplast® Ossicula auditus and Tutoplast® Fascia lata are approved by the German Health Authority
(Approval number: 53968.00.00 for Tutoplast® Spongiosa, PEI.H.03365.01.1 for Tutoplast® Ossicula auditus and 4159.00.00 for Tutoplast® Fascia lata).
Xenogenic products are certified as medical devices in the EU (CE 1275).
As for the availability of products in your country it may vary depending on your national regulations for allogenic and/or xenogenic products.
Please contact the local distributor or Tutogen Medical GmbH Germany for details.

Status: 01.01.2010

Contact

Your Distributor

Tutogen Medical GmbH
Industriestraße 6
D-91077 Neunkirchen am Brand
Germany

www.tutogen.de

Order
Phone: +49 (0) 91 34 / 99 88 - 400
Fax: +49 (0) 91 34 / 99 88 - 419
E-mail: order@tutogen.de

Information
Phone: +49 (0) 91 34 / 99 88 - 500
Fax: +49 (0) 91 34 / 99 88 - 519
E-mail: info@tutogen.de